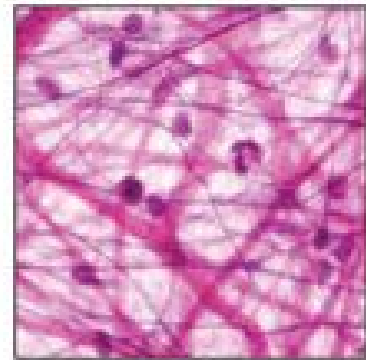
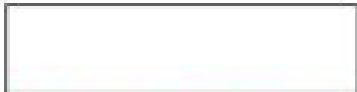
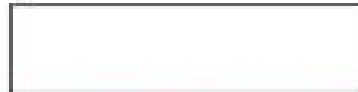


# What are four types of tissue?

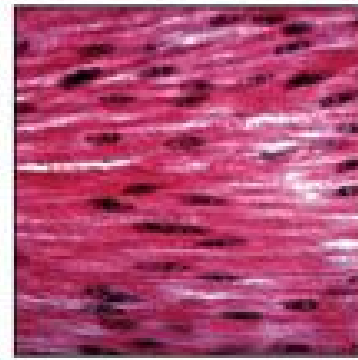
A tissue is a group of cells of the same type.



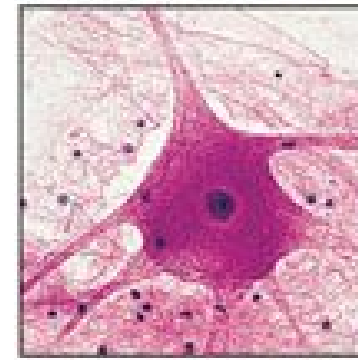
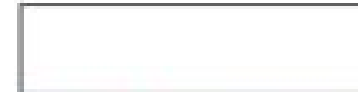
This tissue connects muscles, organs, and bones together in your body.



This tissue is protective and includes linings of organs in your body.



This tissue makes up the muscles in your body.



This tissue makes up your brain, spinal cord, and nerves.

CC3 - Week 1

Epithelial

Nerve

Connective

Muscle